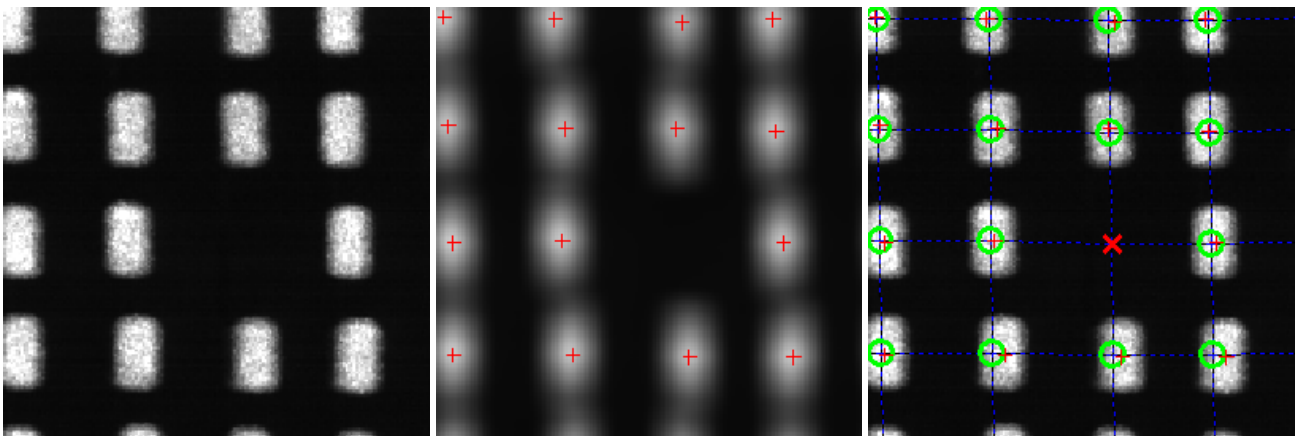
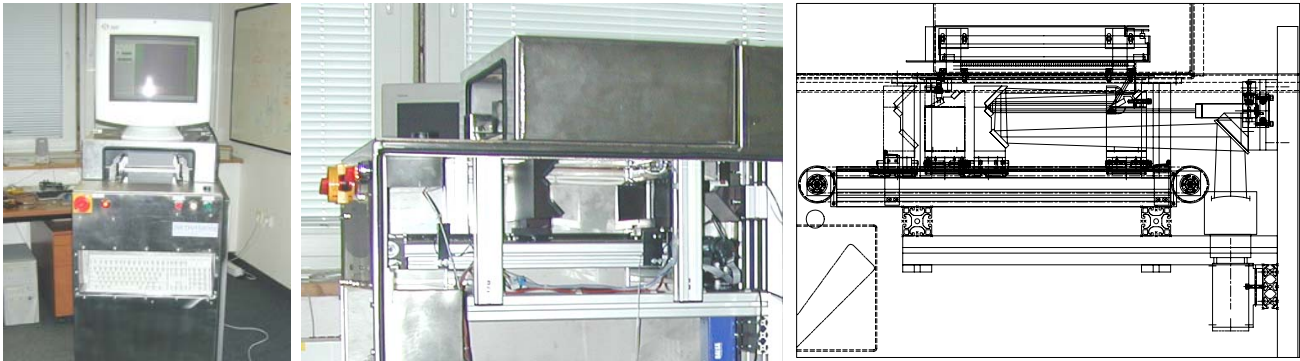


Industrial scanners for quality control

- Technology using digital line-scan CCD cameras with resolution up to 4096 pixels
- The source of light is either scattered laser or row of LEDs
- Unbeatable scanning speed (A4 field in less than 1.5 sec)
- Special mechanic designed for continuous intensive use in industrial environment
- Computer evaluation of the captured data based on the concrete application (objects counting, dimensions, etc.)

Application 1 – counting of electronics parts

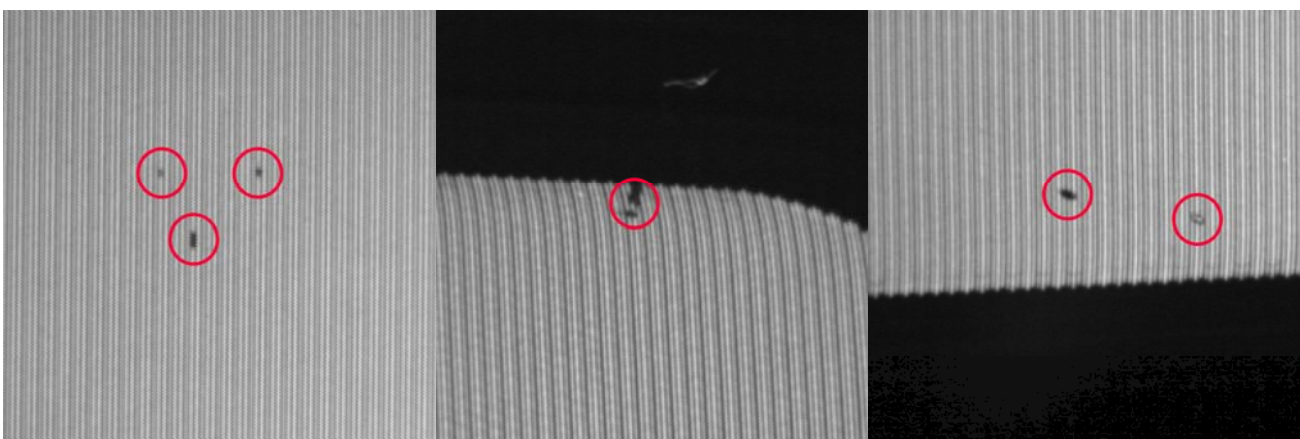


part of measured image

preprocessed data

result of evaluation (missing parts found)

Application 2 – searching for defects during TV tubes production



Some of found defects on enlarged picture of TV tube. Software can mark them with red circle.