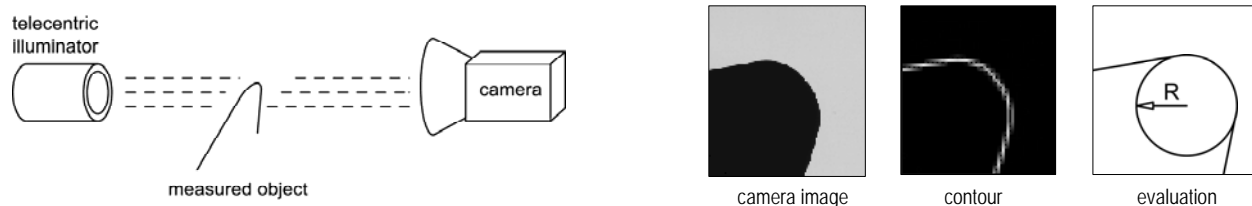


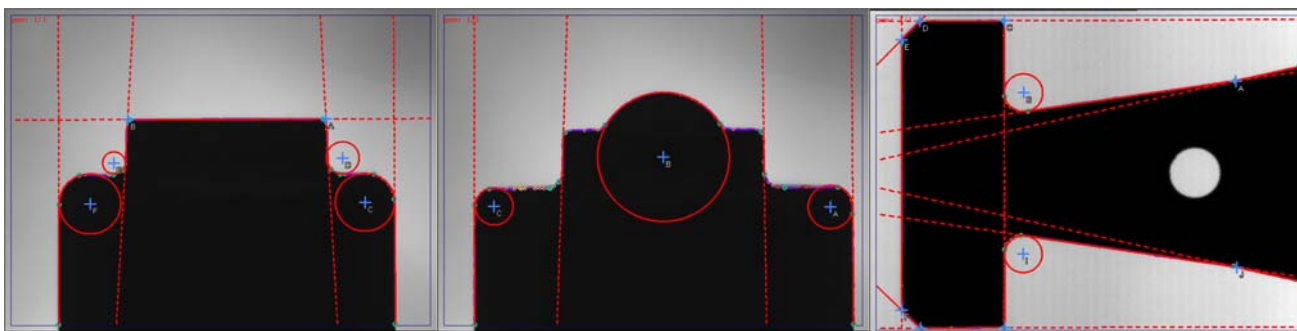
## Precise optical measurement in back illumination

- Technology for precise measurement of the objects shape
- The size of measured objects (field of view) can be up to 20 mm
- The measurement precision depends on the optics and the camera resolution, and can reach  $\pm 1 \mu\text{m}$
- Based on the complexity of measured shape, we can process up to 17 frames per second
- Automatical evaluation of the shape according to the user supplied model
- Possibility to determine and show differences from the CAD drawing (AutoCAD DXF)

## Principle of the measurement



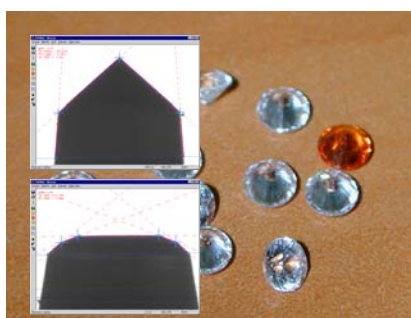
## Examples of evaluation of complicated shapes



## Examples of our solutions



Measurement of rubber printing rollers dimensions



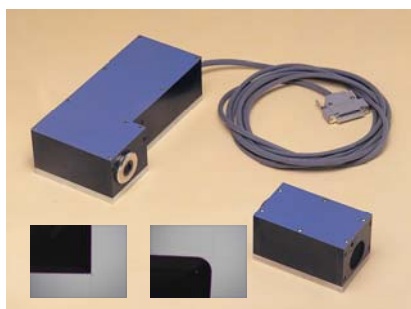
Quality control of jewellery stones



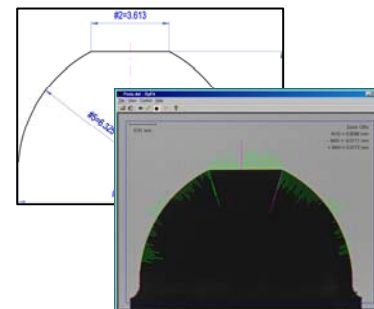
Measurement of molten glass drops size



Measurement of electronic components sizes



Digital profile-projector



Comparison of shape against CAD drawing