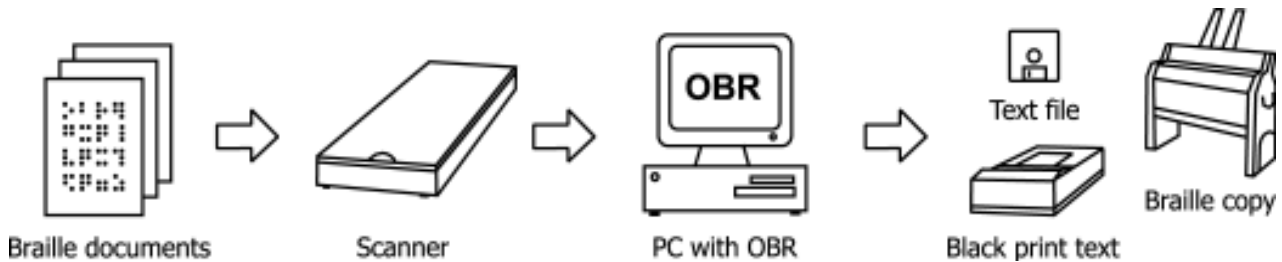




OBR – Optical Braille Recognition

- First out-of-the-box software in the world for reading Braille printed documents with computer
- Uses common flatbed A4 scanner
- World's best quality of the recognition

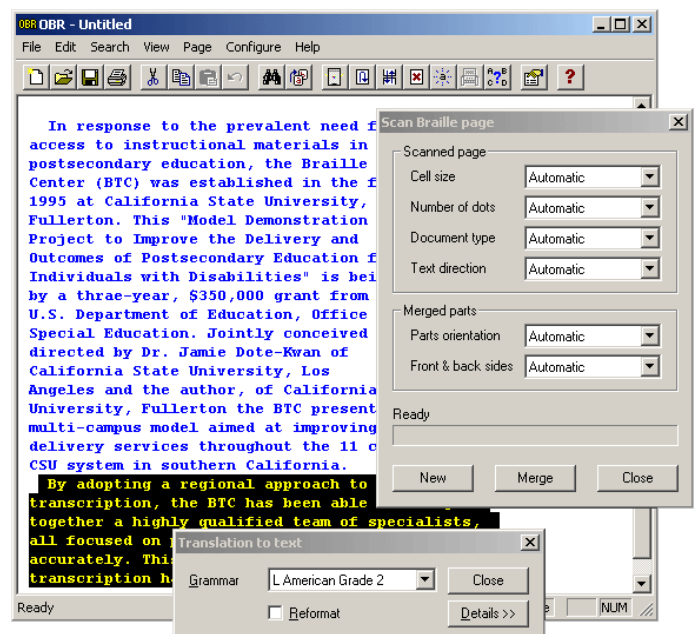
Using the OBR



OBR features

- Reads both single and double sided Braille documents (in single pass, without the need to turn the paper)
- Automatical recognition of 6 and 8 dot Braille
- Merging of pages larger than A4
- Can process documents with paper color ranging from bright white to dark brown
- Resulting text can be further processed, saved into file, or printed on a blackprint or Braille printer
- Software does not require knowledge of Braille, it can be used as a tool when communicating with visually impaired
- Recognition of Braille documents is simple and fast – single page is converted in less than 30 seconds

How OBR looks



NEW - OBR 3.7 Extended version supports scanners A3 and larger

OBR 3.7 Technical data

| | |
|---------------------|---|
| Operating system | Windows 95, 98, NT, 2000, Me, XP |
| Licence key | USB or LPT |
| Scanning area | OBR Standard A4, OBR Extended A3 and larger |
| Recognition quality | 99.98%, i.e. 1-2 wrong dots on a page |
| Braille paper color | from bright white to brown |
| Braille page size | unlimited (can merge from smaller scans) |
| Braille page type | single and double sided, 6 and 8 dot cells |
| Braille cells size | from 2.2 mm to 3.2 mm dot distance |

Supported scanners

(this list is subject to change, for new information please visit our web page <http://www.neovision.cz>)

| | |
|------------------------|--|
| Benq | S2W 450 |
| Canon | LiDE 100, LiDE 200, CanoScan 3200F, CanoScan 4200F, CanoScan 4400F, CanoScan 5200F, CanoScan 5600F, CanoScan 8800F |
| EPSON | Perfection 1260, Perfection 1660, Perfection 1670, Perfection 3200, Perfection V300, GT10000+ * |
| Hewlett Packard | HP 2C, HP 2200C, HP 2300C, HP 2400, HP 3C, HP 3400C, HP 3500C, HP 3570C, HP 3670C, HP 3690C, HP 3970C, HP 4C, HP 4P, HP 4100C, HP 4300C, HP 4470C, HP 4600C, HP 5P, HP 5100C, HP 5200C, HP 6100C, HP 6200C, HP 6300C |
| Microtek | ScanMaker X6, ScanMaker V12USL, ScanMaker X12USL |
| Mustek | BearPaw 1200, BearPaw 1200CP, BearPaw 1200F, BearPaw 1200CS, BearPaw 1200TA, BearPaw 1200UB, BearPaw 2400, Power Pro, ScanExpress A3 * |
| Plustek | OpticBook 3600 |
| UMAX | Astra 1600, Astra 2000P, Astra 2100U, Astra 4500, Astra 4700, Astra 6400, Astra 6450. PowerLook 2100XL * |
| Visioneer | OneTouch 7600, OneTouch 8100, OneTouch 8600, OneTouch 8700 |

* A3 scanners require OBR Extended version for unlimited scanning area

Supported embossers

- Index Braille (All models)

WE OFFER YOU SOLUTION

Contact us:

Neovision, s. r. o.
Barrandova 409
143 00 Praha 4
Czech Republic

Tel.: + 420 225 273 650
Fax: + 420 225 273 680
E-mail: neovision@neovision.cz
Web: <http://www.neovision.cz>

The company is registered in Commercial Register at City Court of Praha, section C, insert 42536 (VAT-Reg.: CZ64943607)